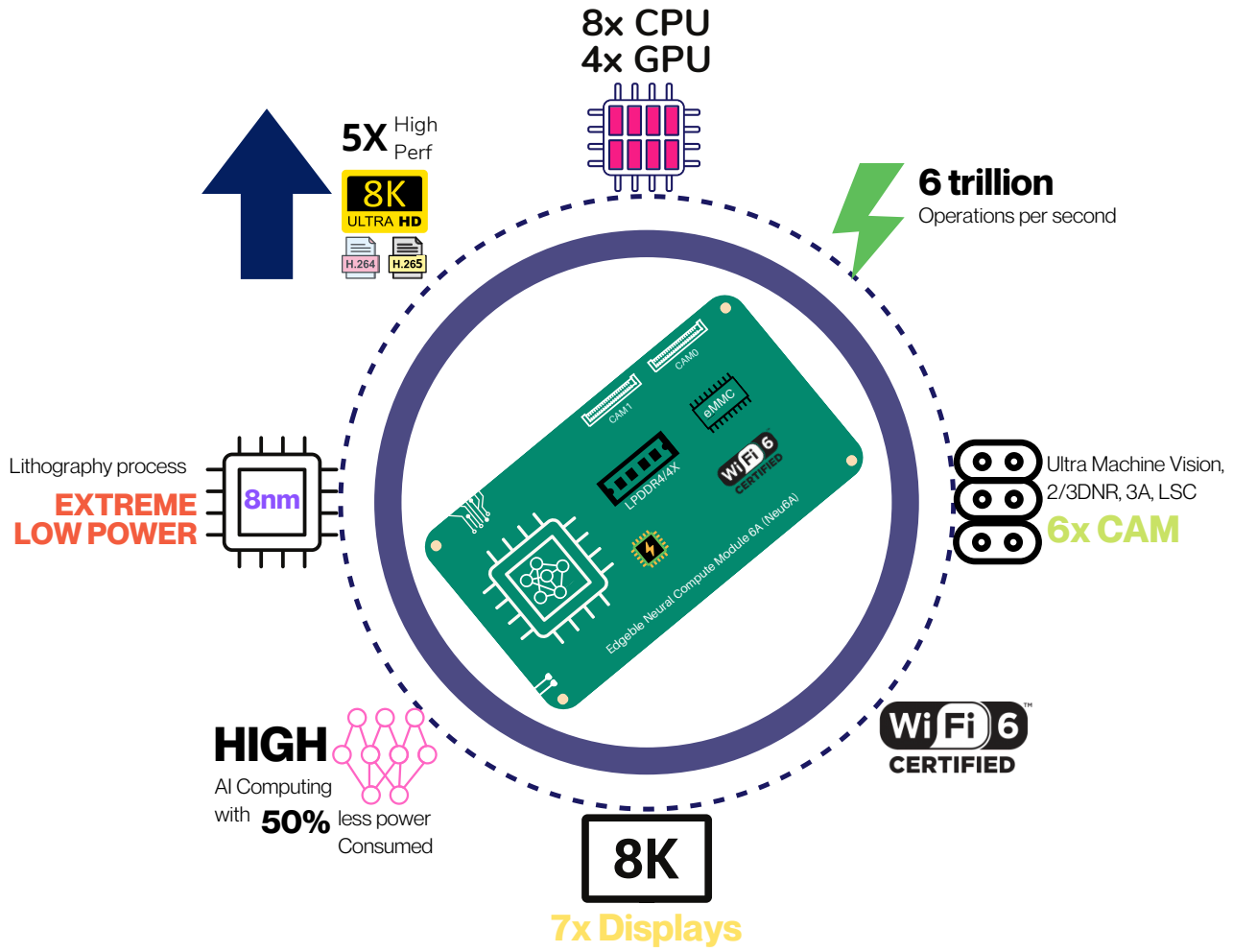


NCM6A/6B

Ultra vision Neurally fast 6TOPS Neural Compute Modules



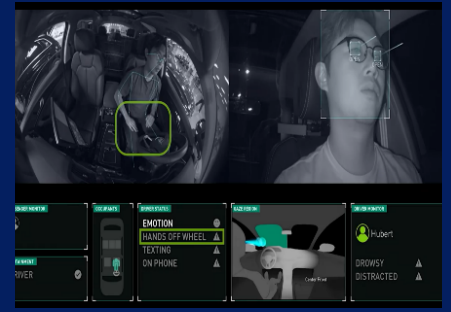
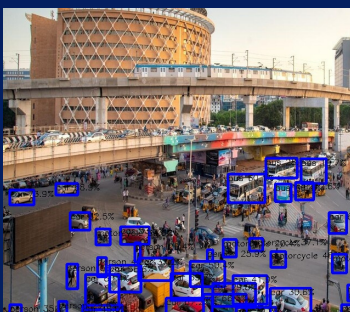
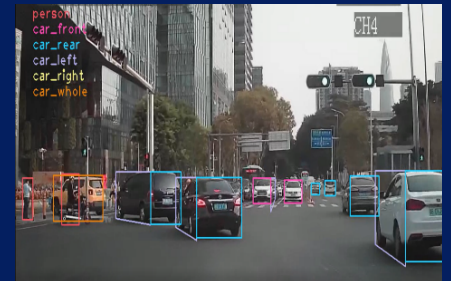
In-house Object Detection

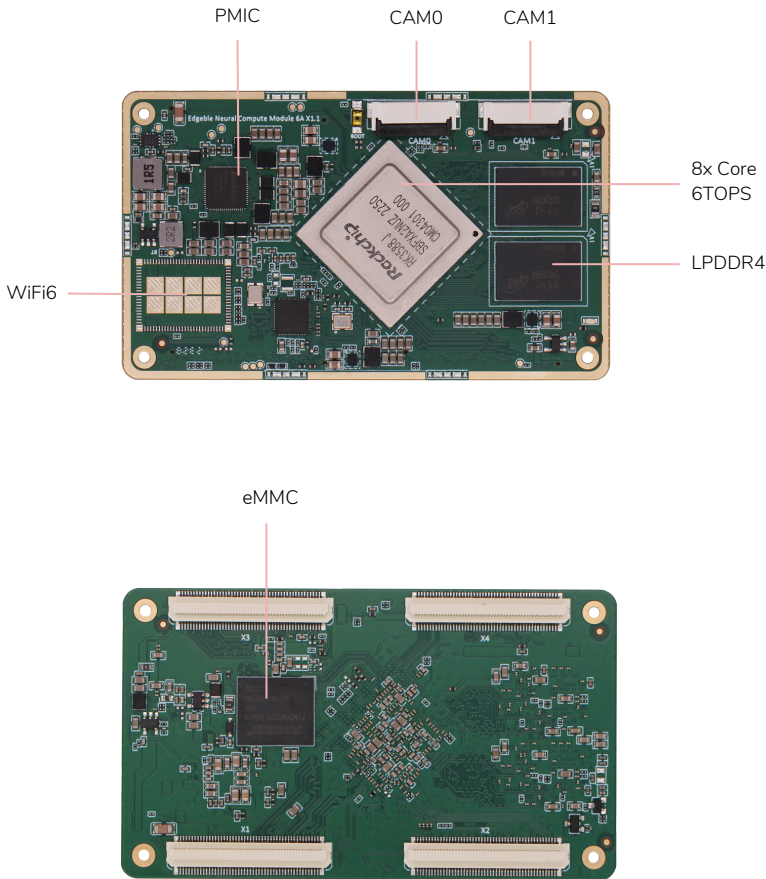


Object Detection In Construction Fields



Vehicle ADAS/DMS





Specifications	
Neural Accelerator Family	Neu6A - RK3588 - Consumer grade, 0°C to +80°C Neu6B - RK3588J- Industrial grade, -40°C to +85°C
Silicon	4x Core ARM Cortex-A76, 2.4GHz, 4x Core ARM Cortex-A55, 2.4GHz ARM Mali-G610 MP4 8nm Lithography process, Secure Engine
AI Accelerator	6 TOPS with INT4/INT8/INT16/FP16
Image Signal	48M ISP, 3 Sensor Input with HDR, 3DNR, 2DNR, 3A
Encoder	Smart H.264/H.265/VP9 with 8K60 decoder
Decoder	4K@60fps, 8K@60fps
Video Interfaces	2x MIPI DSI with 4-lane, up to 4K@60fps 6x MIPI CSI 2 with 4-lane, 2.5Gbps/lane 2x HDMI2.1 2x eDP 2x DPI1.4 1x HDMI In
Connectivity	1x PCIe3.0 3x PCIe2.1 3x SATA 3.1 3x USB 3.0 2x USB 2.0
On Module Interfaces	2x MIPI CS2 4-lane Dual-Band Industrial range WiFi6/BT5.2 module, 4GB/8GB/16GB/32GB LPDDR4/LPDDR4X 16GB/32GB/64GB/128GB eMMC Flash
Audio	8ch I2S with TDM/PDM
Dimensions	85 x 50 x 6 mm
Carrier Board	Compact sized Industrial Carrier board.
Software	Linux - 5.10, Mainline Linux, OpenAIA (Yocto Kirkstone, Debos)
Certifications	Wifi6, RED/FCC/IC/TELEC/SRRC/RCM
Ordering	
NCM6A-000	RK3588, 4G LPDDR4, 32GB eMMC, RTL8852BE WiFi6/BT5
NCM6A-001	RK3588, 8G LPDDR4, 64GB eMMC, RTL8852BE WiFi6/BT5
NCM6A-002	RK3588, 16G LPDDR4, 128GB eMMC, RTL8852BE WiFi6/BT5
NCM6B-000	RK3588J, 4G LPDDR4, 32GB eMMC, Open M.2 2126 WiFi6
NCM6B-001	RK3588J, 8G LPDDR4, 64GB eMMC, Open M.2 2126 WiFi6
NCM6B-002	RK3588J, 16G LPDDR4, 128GB eMMC, Open M.2 2126 WiFi6

A Comprehensive Pre-trained AI Accelerator Platform

Accelerate Your Edge AI deployments with Secure, Scalable, Fast, and Fail-safe Edgeble Pre-trained AI Accelerator Platform.

